



Aircraft Industries



www.let.cz / pps@let.cz / +420 572 817 664
Aircraft Industries, a.s. / Na Záhonech 1177 / Kunovice 686 04 / Czech Republic

SERVICE BULLETIN

SB No. **L-410/022b**

Aeroplane Type: **L-410**

Revision No. **IR**

Date of Issue: **Mar 10, 2021**

The technical content of this document is approved under the authority of DOA No. EASA.21J.119

Classification: Recommended

Subject: Repair of the MA-16K pressure gauge colour marking of the front baggage compartment fire extinguisher.

Supersedure: N/A

1. PLANNING INFORMATION

A. APPLICABILITY

L 410 UVP-E, E9, E20 aeroplanes up to S/N 3306 inclusive and MA-16K pressure gauges which are stored as spare parts.

B. CONCURRENT REQUIREMENTS

None.

C. REASON

Incorrectly marked minimum pressure scale line.

D. COMPLIANCE TIME

As per operator's requirement.

E. MANPOWER

Supposed Man-hours: 1 M-hour.

F. MATERIAL

None.

G. NEW EQUIPMENT

None.

H. SPECIAL TOOLS

None.

I. EXPENSES

To be covered by the operator.

J. WEIGHT AND BALANCE

Without influence.

K. REFERENCE DOCUMENTS

1. Drawings

B583 314X Inscription scales of onboard instruments

L. AFFECTED DOCUMENTS

AFM it will be incorporated by next AFM revision
MS not affected
MM not affected
WM not affected

2. IMPLEMENTATION INFORMATION

A. PREPARATORY WORK

None.

B. CHECK OR INSPECTION

None.

C. REPAIR

Colour marking is accomplished on the instrument glass (RH instrument panel)

- Remove a red line at the value of 4 kp/cm² (57 PSI) and appropriate part of a green arc by acetone according to the Dwg No. B583 314X.
- Make a red line at the value of 8.2 kp/cm² (122 PSI) by means of self-adhesive tape and red paint – RAL 3020.

Colour marking is accomplished on the instrument scale (RH instrument panel)

- Remove a locking ring and glass from the MA-16K pressure gauge. Do not damage a pointer!
- Overlay a red line at the value of 4 kp/cm² (57 PSI) and appropriate part of a green arc by black paint (RAL 9005) according to the Dwg No. B583 314X.
- Make a red line at the value of 8.2 kp/cm² (122 PSI) by means of self-adhesive tape and red paint – RAL 3020.
- Install back a glass on the pressure gauge and secure it by locking ring.

D. TESTS

1. Ground Tests

None.

2. Flight Tests

None.

E. COMPLETION WORK

None.

3. BILL OF MATERIAL

None.

4. RECORD IN THE AEROPLANE LOGBOOK

Repair of the MA-16K pressure gauge colour marking on the RH instrument panel has been accomplished in accordance with the L-410/022b Service Bulletin.

Record the repair of MA-16K pressure gauge colour marking into Certificate of the aggregate after the bulletin implementation.

Date:

Accomplished by:

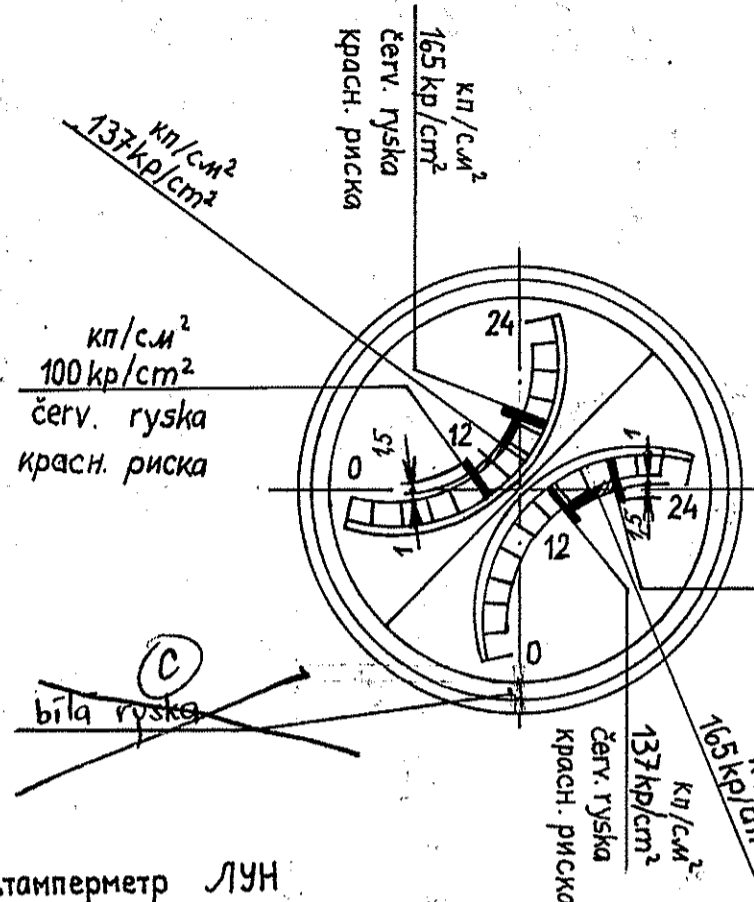
(name and signature of authorised staff)

Двойной манометр УИ2-240К

Dvojitý tlakoměr UI2-240K

Действует для давления сети

Platí pro tlak sítě

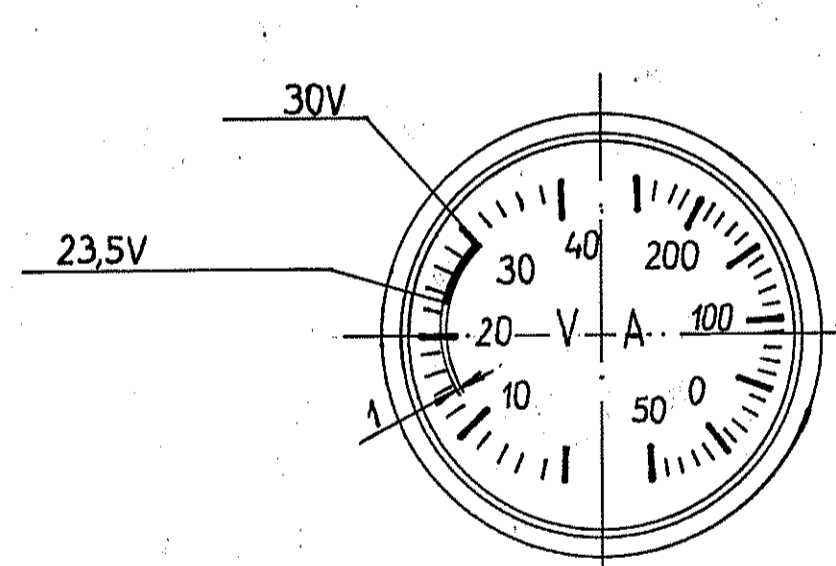


Вольтметр ЛУН

Voltampérmetr LUN 2743.01

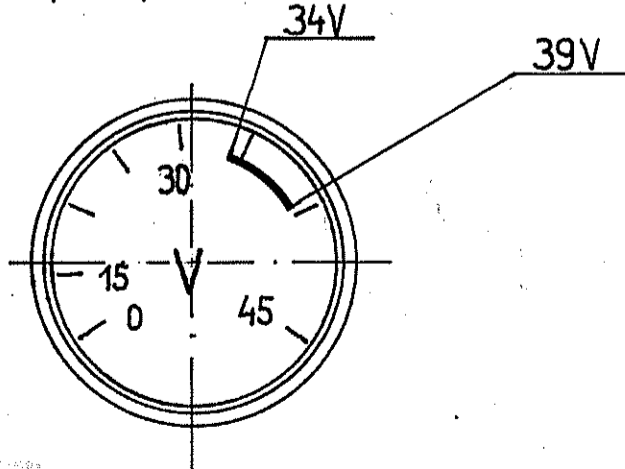
Na pravé pal. desce blíže k obrysu trupu (pravý)

Baterie A28



Voltmetr VF04-46

Вольтметр ВФ 04-46

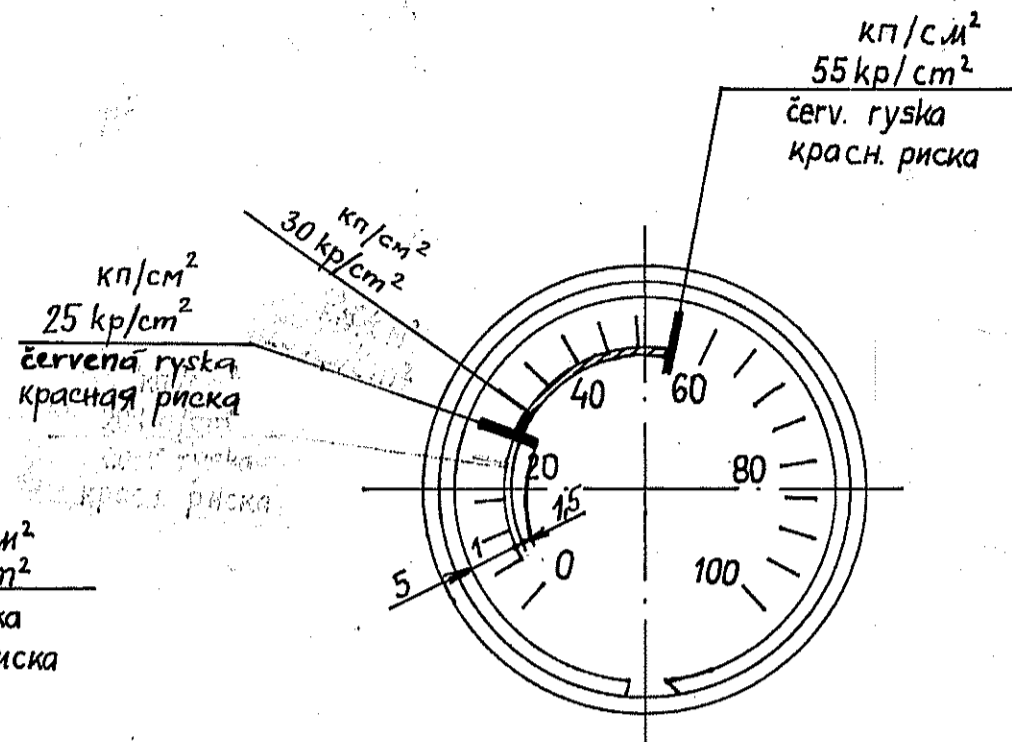


Манометр МА-100

Manometr MA-100

Platí pro tlak parkov. brzdy

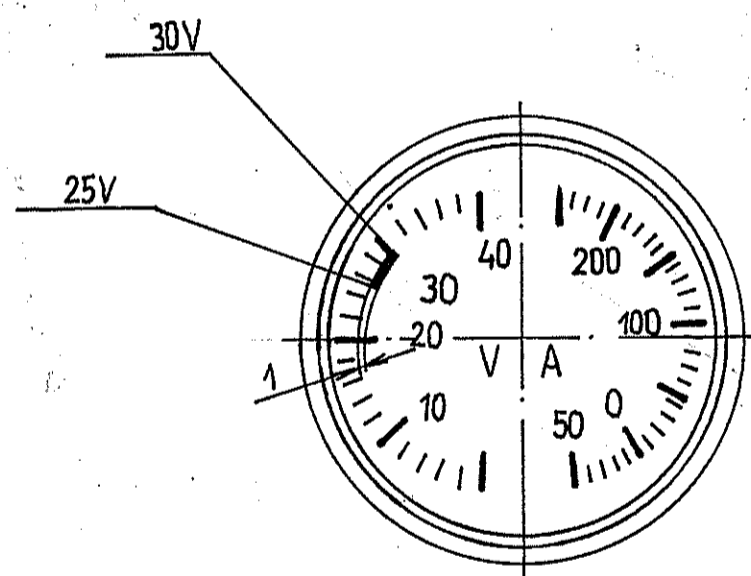
Действует для давления стояноч. тормоза



Вольтметр ЛУН

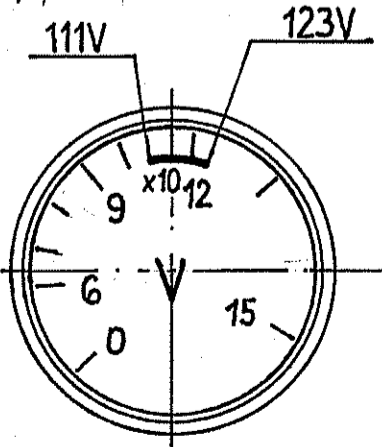
Voltampérmetr LUN 2743.01

Na pravé pal. desce blíže k ose letounu.



Voltmetr VF04-150

Вольтметр ВФ 04-150

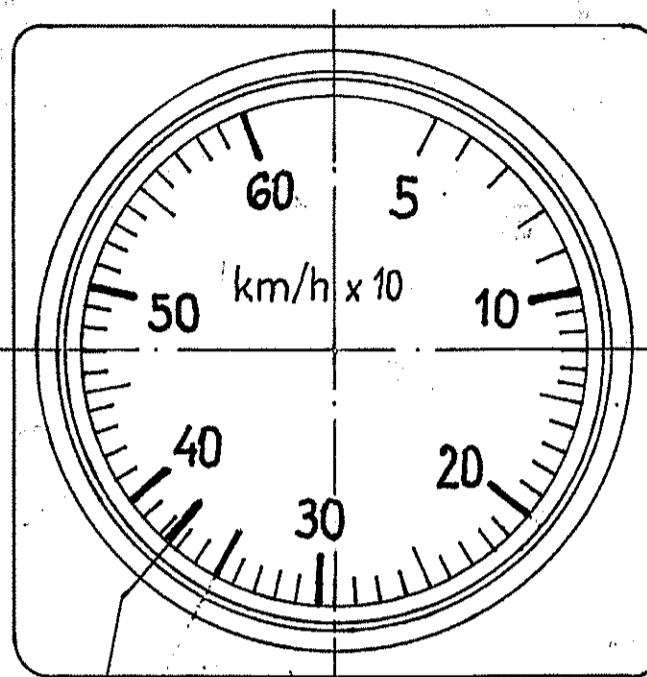


Указатель скорости

Rychloměr

LUN 1113.02-8

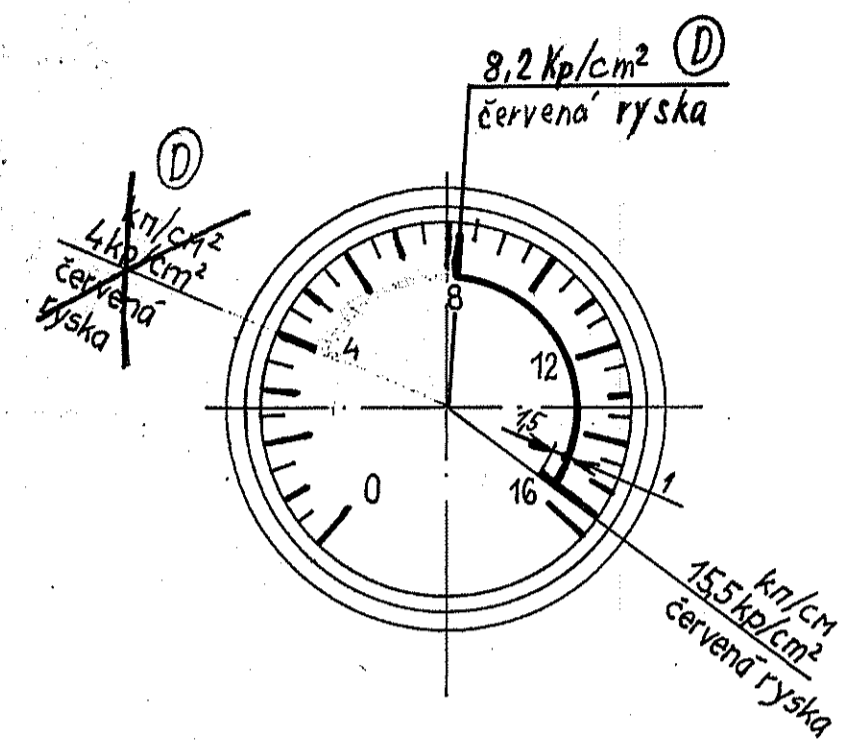
ЛУН



37.5 km/h
červ. rýska
красн. рýска

Манометр МА-16К

Manometr MA-16K

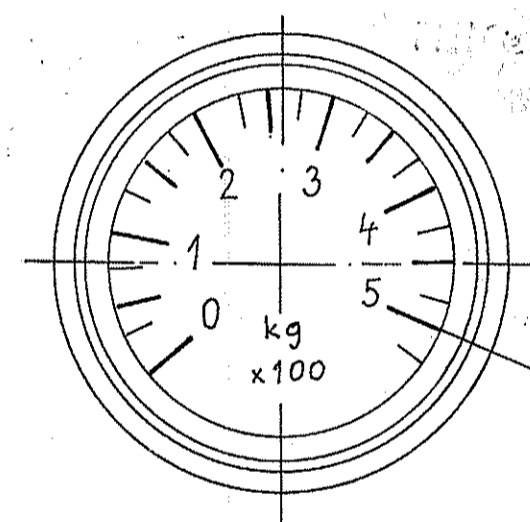


Топлиномер ЛУН

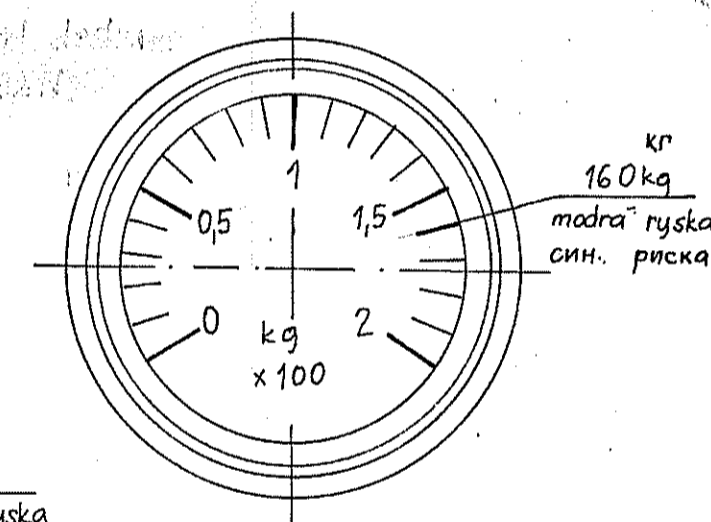
Palivoměr LUN 1634.01-8 (2x)

Топлиномер ЛУН

Palivoměr LUN 1674 (2x)



500 kg
modrá rýska
син. рýска



160 kg
modrá rýska
син. рýска

Popis proved'te na skle barvou C 2001, u manometrů MA-100 a MA-16K na stupnici.

Описание исполнить на стекле краской C 2001.

Bílá rýska - šíře 1mm - odstín 1000

Синая рýска - ширина 1mm - оттенок 4400

Modrá rýska - šíře 1mm - odstín 4400

Červená rýska - šíře 1mm - odstín 8140

Красная рýска - ширина 1мм - оттенок 8140

zelená
5300
odstín
оттенок

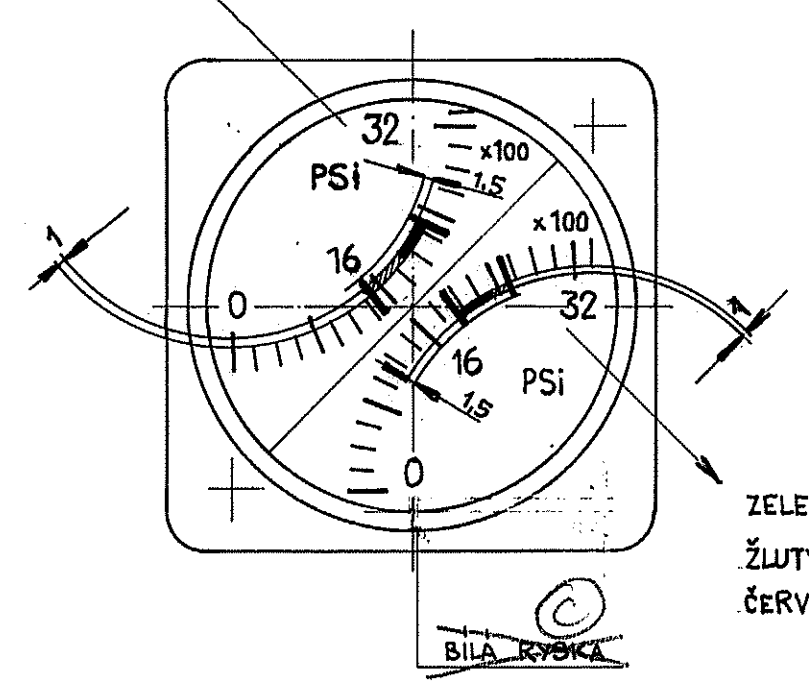
žlutá
6200
odstín
оттенок

TABULKA INDEXŮ		
INDEX	INDEX LISTU č.	
POLOŽKY	1	2
B	B	-
C	C	C
D	D	D

Uživatel:		Poznámka:	
Číslo:			
Materiál:			
Polotovary:			
Měřitko:	1:1	Datum:	21.10.95
Prezkoušel:		Vyřadil:	
Statik:		Schválil:	
		Typ:	L42.0
		Název:	Popis stupnic palub. přístrojů
		Číslo:	B 583 314 X
		Ev. čís.:	

Dvojitý tlakoměr UI 2 - 240 K

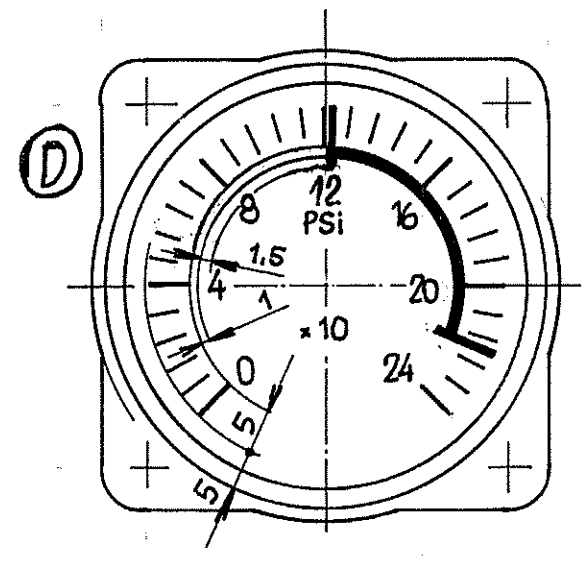
ŽLUTÝ OBLOUK 1420 ÷ 1950 PSI
 ZELENÝ OBLOUK 1950 ÷ 2350 PSI
 ČERVENÁ RYSKA 1420 A 2350 PSI



ZELENÝ OBLOUK 1950 ÷ 2350 PSI
 ŽLUTÝ OBLOUK 2350 ÷ 2560 PSI
 ČERVENÁ RYSKA 1950 A 2560 PSI

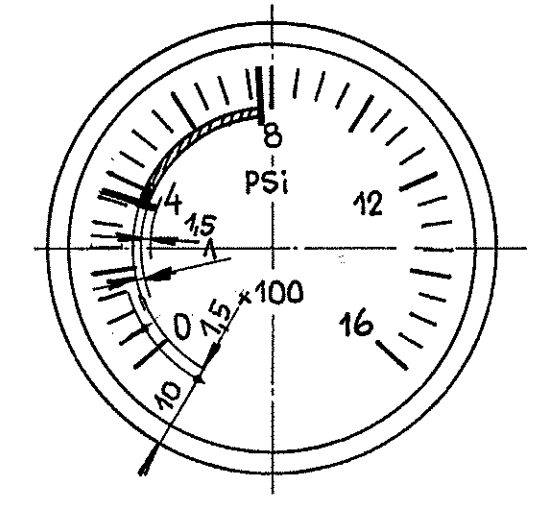
Manometr MA - 16 K

ZELENÝ OBLOUK 122 ÷ 221 PSI
 ČERVENÁ RYSKA 122 A 221 PSI



Manometr MA - 100

ZELENÝ OBLOUK 360 ÷ 430 PSI
 ŽLUTÝ OBLOUK 430 ÷ 780 PSI
 ČERVENÁ RYSKA 360 A 780 PSI



Pažka	Kosa	Název	Číslo výkresu	C. a. k.	Materiál	Pr. ú.	Číslo	Podpis	Poznámka
Očtylky netal. rozměrů:				L 420 Výstroj					
Úprava povrchu:				B 583 314 X					
Materiál:				L 420 Výstroj					
Polotovary:				L 420 Výstroj					
Měřítka	1:1	21.8.98		NOVA	ZKB 52881	2610	25.8.98	Prava	
				S B 582 800 N b.v.					
				L 420 Výstroj					
				B 583 314 X					
				List 2 listů 2 Ev. č.:					