



Aircraft Industries



www.let.cz / pps@let.cz / +420 572 817 664  
Aircraft Industries, a.s. / Na Záhonech 1177 / Kunovice 686 04 / Czech Republic

# SERVICE BULLETIN

SB No. **L-410/080b**

Aeroplane Type: **L-410**

Revision No. **IR**

Date of Issue: **Mar 20, 2024**

The technical content of this document is approved under the authority of the DOA ref. EASA.21J.119.

**Classification:** Recommended

**Subject:** Sticking of an identification label on the swing arm of Main Landing Gear leg.

**Supersedure:** N/A

## 1. PLANNING INFORMATION

### A. APPLICABILITY

L 410 UVP-E20 aeroplanes from S/N 3307 to 3412 (except S/N 3309, 3310, 3311) equipped with LH L3 211 900 MLG leg and RH L3 212 900 MLG leg and these legs which are stored as spare parts.

### B. CONCURRENT REQUIREMENTS

None.

### C. REASON

Labelling of a part with a limited service life.

### D. COMPLIANCE TIME

As per operator's requirement.

### E. MANPOWER

Supposed Man-hours: 1 M-hour



**F. MATERIAL**

Will be delivered by the aeroplane manufacturer Aircraft Industries, a.s., 686 04 Kunovice, Czech Republic based on request.

**G. NEW EQUIPMENT**

None.

**H. SPECIAL TOOLS**

None.

**I. EXPENSES**

To be covered by the operator.

**J. WEIGHT AND BALANCE**

Influence of the installation on an empty aeroplane weight and moment is negligible.

**K. REFERENCE DOCUMENTS**

**1. Maintenance Manual, Doc. No. Do-L410-1232.2, chap.:**

032.10.00

**L. AFFECTED DOCUMENTS**

AFM not affected

MS not affected

MM not affected

WM not affected

## 2. IMPLEMENTATION INFORMATION

### A. PREPARATORY WORK

None.

### B. CHECK OR INSPECTION

None.

### C. DISASSEMBLY

None.

### D. STICKING OF AN IDENTIFICATION LABEL

- Trim the identification label to a length of 354 mm according to the Fig. 1. Use the relevant identification label from material of point 3.A. of this bulletin.

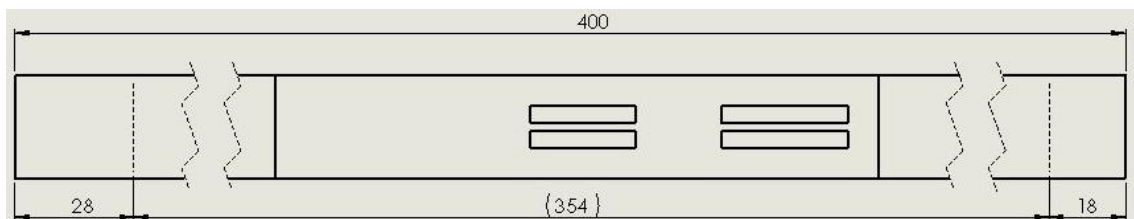


Fig. 1

- Bend the 10 mm long part at an angle of 90° on the left side of the label. Make 2 bends of 10 mm each at angles of 90° on the right side of the label.



Fig. 2

- Measure and mark the place for sticking of the label on the swing arm pos. 4, MM, Chap. 032.10.00, Fig. 1, page 2 according to the Fig. 3 of this bulletin.
- Roughen surfaces for sticking on the swing arm and label with fine emery paper. Degrease the surfaces with benzine.
- Bend the label around the swing arm body – see Fig. 4.
- Remove the label and apply contact adhesive Chemopren Extrem or equivalent, e.g. Scotch Weld EC 847 or EC 1300L on both bonded surfaces. Stick the label on according to the Fig. 3 and press all around.

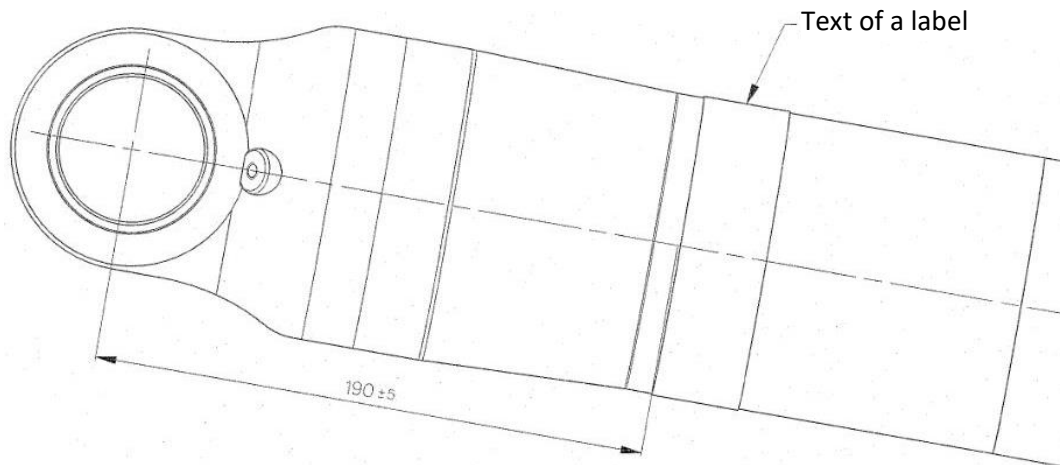


Fig. 3

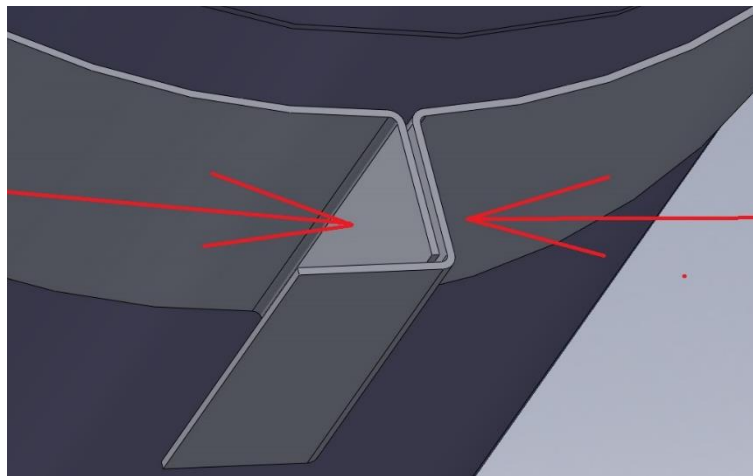


Fig. 4

- Tighten the label all around and bend the end part – see Fig. 5.

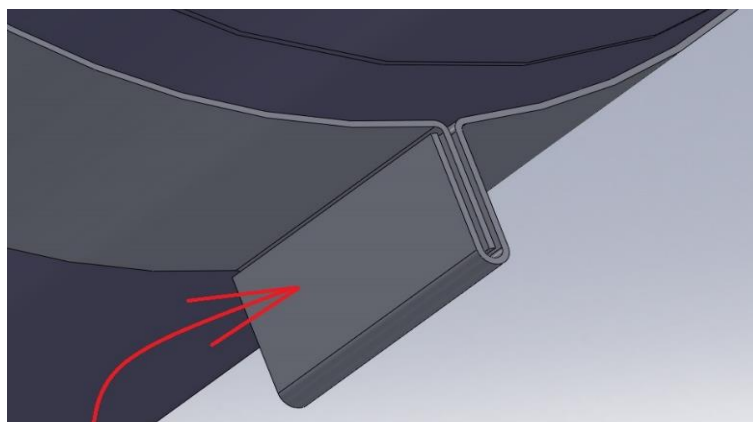


Fig. 5

- Finish the bend – see Fig. 6.

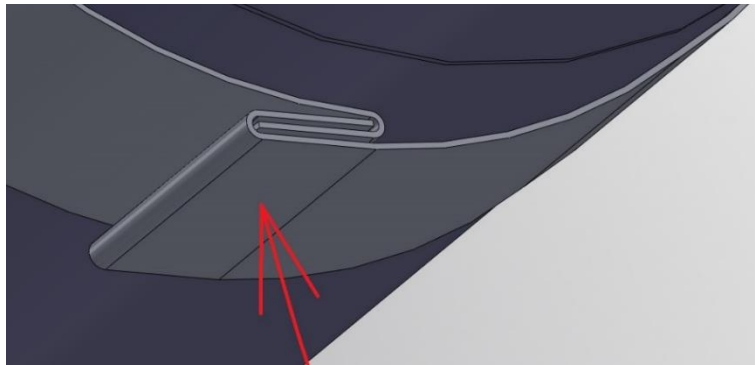


Fig. 6

- Shape the joint including the radius – see Fig. 7.

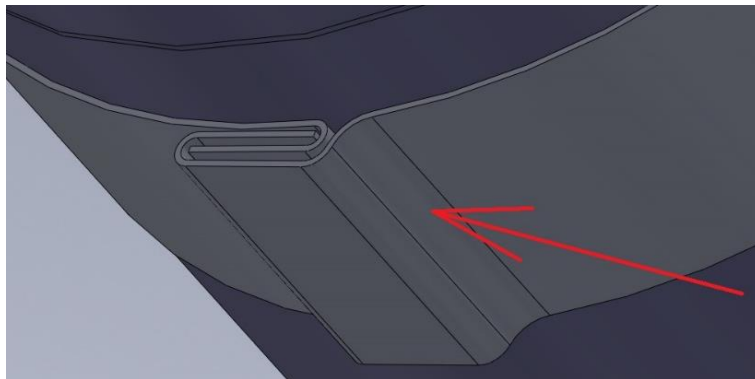


Fig. 7

- Secure the joint with three punches – see Fig. 8.

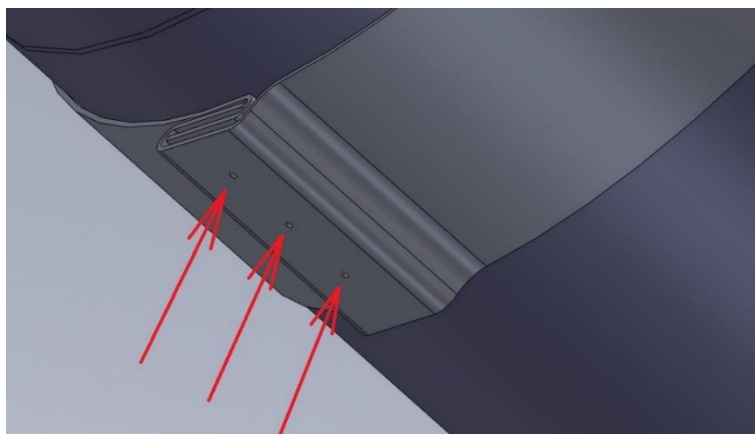


Fig. 8

- Allow the label to dry at 20 °C for 30 minutes. Coat the label with synthetic glossy colourless varnish.

## E. TESTS

### 1. Ground Tests

None.

### 2. Flight Tests

None.

## F. COMPLETION WORK

None.

## 3. BILL OF MATERIAL

### A. MATERIAL DELIVERED BY THE AEROPLANE MANUFACTURER

S/N of an Aeroplane	Type of a MLG	S/N of a MLG	Prod. No. of a Swing Arm
3307	L3 211 900	M410L3017	410N941
	L3 212 900	M410P3006	410N988
3308	L3 211 900	M410L3018	410N940
	L3 212 900	M410P3007	410N000897
3312	L3 211 900	M410L3019	410N197
	L3 212 900	M410P3012	410N000743
3313	L3 211 900	M410L3031	410N000871
	L3 212 900	M410P3021	410N000847
3314	L3 211 900	M410L3024	410N000739
	L3 212 900	M410P3011	410N000742
3315	L3 211 900	M410L3034	410N001017
	L3 212 900	M410P3022	410N000941
3316	L3 212 900	M410P3014	410N000744
	L3 211 900	M410L3022	410N000736
3317	L3 211 900	M410L3016	410N000892
	L3 212 900	M410P3004	410N0009896
3318	L3 211 900	M410L3020	410N195
	L3 212 900	M410P3008	410N939
3319	L3 212 900	M410P3009	410N938
	L3 211 900	M410L3023	410N000735
3320	L3 212 900	M410P3013	410N000741
	L3 211 900	M410L3025	410N000737
3401	L3 211 900	M410L3028	410N000872
	L3 212 900	M410P3019	410N000836
3402	L3 211 900	M410L3029	410N000869
	L3 212 900	M410P3018	410N000832

S/N of an Aeroplane	Type of a MLG	S/N of a MLG	Prod. No. of a Swing Arm
3403	L3 211 900	M410L3030	410N000870
	L3 212 900	M410P3017	410N000834
3404	L3 212 900	M410P3016	410N000833
	L3 211 900	M410L3027	410N000873
3405	L3 211 900	M410L3032	410N000937
	L3 212 900	M410P3020	410N000835
3406	L3 211 900	M410L3033	410N000939
	L3 212 900	M410P3023	410N000942
3407	L3 211 900	M410L3037	410N000936
	L3 212 900	M410P3026	410N000945
3408	L3 211 900	M410L3036	410N000938
	L3 212 900	M410P3027	410N001062
3409	L3 211 900	M410L3035	410N000940
	L3 212 900	M410P3030	410N001059
3410	L3 211 900	M410L3038	410N001106
	L3 212 900	M410P3029	410N001058
3411	L3 211 900	M410L3039	410N001108
	L3 212 900	M410P3025	410N000944
3412	L3 212 900	M410P3028	410N001057
	L3 211 900	M410L3041	410N001203
Spare Parts	L3 211 900	M410L3045	410N001198
	L3 212 900	M410P3034	410N001326

#### 4. RECORD IN THE AEROPLANE LOGBOOK

Record implementation of this L-410/080b Service Bulletin.