



Aircraft Industries



www.let.cz / pps@let.cz / +420 572 817 664  
Aircraft Industries, a.s. / Na Záhonech 1177 / Kunovice 686 04 / Czech Republic

# SERVICE BULLETIN

SB No. **L-410/110b**

Aeroplane Type: **L-410**

Revision No. **IR**

Date of Issue: **Mar 12, 2025**

The technical content of this document is approved under the authority of the DOA ref. EASA.21J.119.

**Classification:** Recommended.

**Subject:** Inspection of the wing flaps and slats for cracks.

**Supersedure:** N/A

## 1. PLANNING INFORMATION

### A. APPLICABILITY

L 410 UVP-E20 aeroplanes from S/N 3301 to S/N 3415 inclusive.

L 410 NG aeroplanes S/N 5002, 5003.

### B. CONCURRENT REQUIREMENTS

None.

### C. REASON

Possible occurrence of cracks on the bottom side of wing flaps and slats at the rivets area along the front spar.

### D. COMPLIANCE TIME

At the next Check 1 periodic maintenance.

### E. MANPOWER

Supposed Man-hours: 0.5 M-hours

### F. MATERIAL

None.



**G. NEW EQUIPMENT**

None.

**H. SPECIAL TOOLS**

None.

**I. EXPENSES**

To be covered by the operator.

**J. WEIGHT AND BALANCE**

Without influence.

**K. REFERENCE DOCUMENTS**

1. **Maintenance Manual, Doc. No. Do-L410-1232.2, sec.:**  
057.50.00
2. **Airframe Repair Manual of L 410, Doc. No. Do-L410-2021.2, sec.:**  
51-00-00
3. **Maintenance Manual, Doc. No. Do-L410NG-1230.2, sec.:**  
57-50-00

**L. AFFECTED DOCUMENTS**

AFM not affected  
MS not affected  
MM not affected  
WM not affected

## 2. IMPLEMENTATION INFORMATION

### A. PREPARATORY WORK

None.

### B. CHECK OR INSPECTION

Inspect visually skin of the LH and RH wing flaps bottom side along the front spar in the rivets areas No. I, II, III, IV, V, VI, VII marked in the Figures 1 and 2.

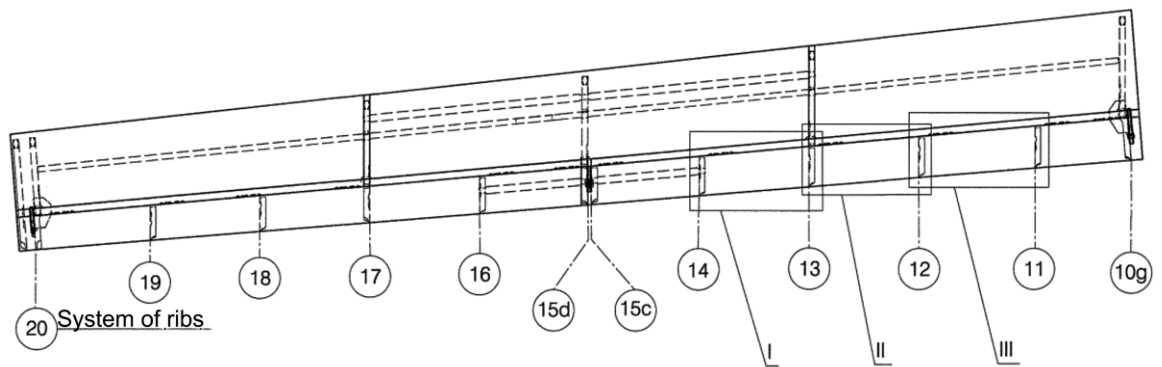


Fig. 1 Outboard wing flap bottom side

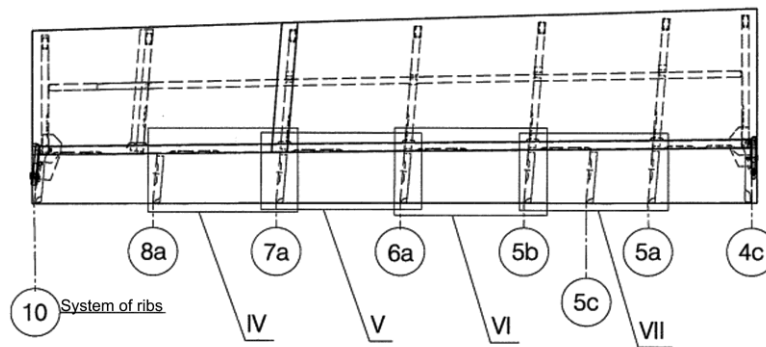


Fig. 2 Inboard wing flap bottom side

Inspect visually skin of the LH and RH slats bottom side along the spar in the rivets areas No. IX, X, XI, XII, XIII, XIV, XV marked in the Figures 3 and 4.

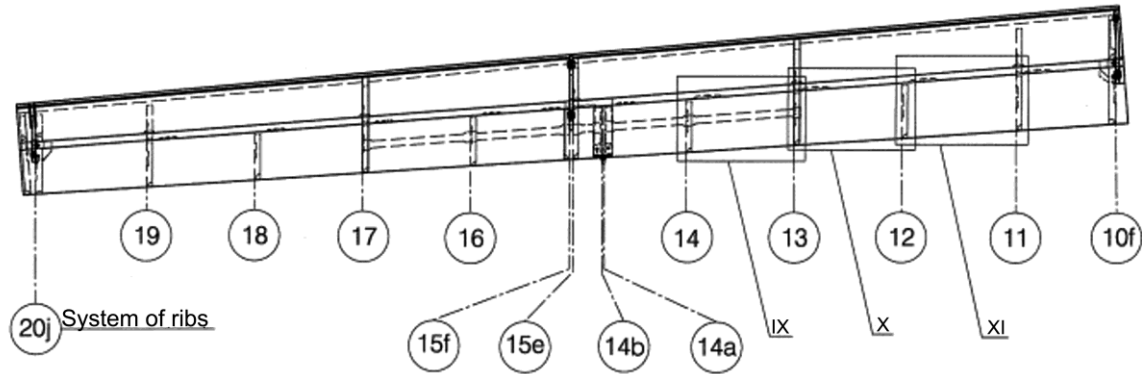


Fig. 3 Outboard slat bottom side

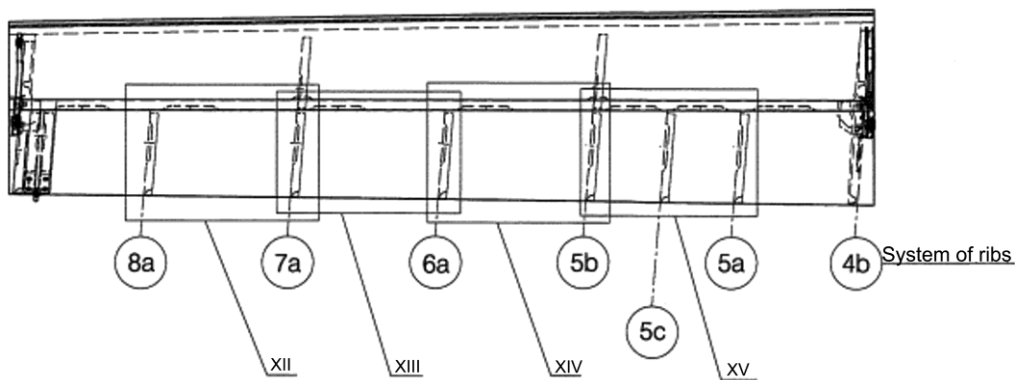


Fig. 4 Inboard slat bottom side

Repair the wing flap/s and/or slat/s in accordance with the ARM, sec. 57-00-00, page 424 if the number or length of cracks specified in the MM, sec. 057.50.00, Fig. 303 are exceeded on the L 410 UVP-E20 aeroplanes.

Contact Aircraft Industries, a.s. if the number or length of cracks specified in the MM, sec. 57-50-00, point 4.E.(3), page 304 are exceeded on the L 410 NG aeroplanes.

If any crack is found, send the completed Report of Corrosion/Structure Damage to e-mail: [reporting@let.cz](mailto:reporting@let.cz). You can download the Report of Corrosion/Structure Damage from the [clientzone.let.cz/](http://clientzone.let.cz/) in the Operation Manuals / Manuals for Maintenance and Repairs.

**C. DISASSEMBLY**

None.

**D. ASSEMBLY**

None.

**E. TESTS**

**1. Ground Tests**

None.

**2. Flight Tests**

None.

**F. COMPLETION WORK**

None.

**3. BILL OF MATERIAL**

None.

**4. RECORD IN THE AEROPLANE LOGBOOK**

Record inspection or repair according to the L-410/110b Service Bulletin.